

480P

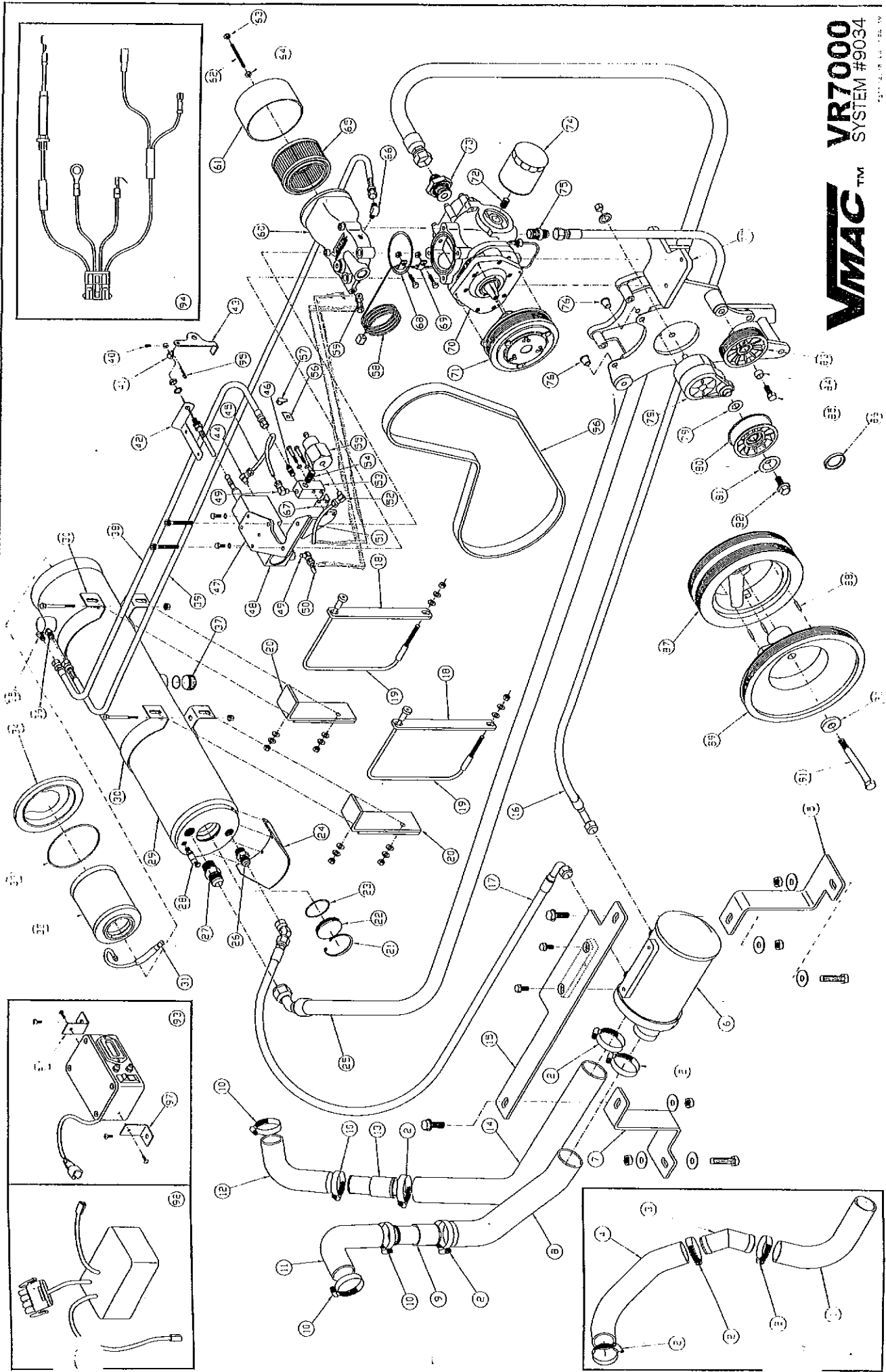


ILLUSTRATED PARTS LIST FOR SYSTEM 9034 1999 GMC SIERRA & CHEVROLET SILVERADO CK2500 5.3L & 6.0L

ITEM	UNIT	QTY	PART#	DESCRIPTION
1	ea	1	17351	Hose, Cooler to connector
2	ea	7	22026	Hose clamp HS28
3	ea	1	17358	Beaded elbow, 45°
4	ea	1	17350	Connector rad hose
5	ea	1	12213	Left cooler mount bracket
6	ea	1	92162	Cooler
7	ea	1	12214	Right cooler mount bracket
8	ea	1	15446	3/8" x 3/4" G8 flange HHCS
9	ea	1	32061	Reducer
10	ea	4	22062	Hose clamp HS24
11	ea	1	17116	Hose, rad to reducer
12	ea	1	17116	Hose, rad to reducer
13	ea	1	32061	Reducer
14	ea	1	17346	Rad hose
15	ea	1	12215	Cooler bracket
16	ea	1	17342	Oil return line (cooler to comp.) 1/2" x 30.5" long
17	ea	1	17341	Oil return line 1/2" x 80.0" long c/w 45° fitting
18	ea	2	<del>22107</del>	Tank strap flat bar 22113
19	ea	2	22106	Tank cable strap
20	ea	2	12219	Tank strap mount
21	ea	1	15385	Retaining ring
22	ea	1	32033	Sight glass window
23	ea	1	58008	Viton o-ring 1 5/16" ID x 3/32" wide
24	ea	1	12202	Guard plate
25	ea	1	17340	Main air line 3/4" x 84.0" long
26	ea	1	50060	1/2" NPT to 1/2" SAE brass connector
27	ea	1	49033	3/4" NPT to 3/4" 37° JIC, steel connector
28	ea	1	36054	200 PSI safety valve
29	ea	1	3041	Tank
30	ea	2	22105	Mounting bracket
31	ea	1	36035	Screen barb
32	ea	1	36036	Coalescing filter element
33	ea	1	58007	Viton o-ring, 4 1/2" ID x 1/8" wide
34	ea	1	32156	Discharge cap
35	ea	1	50064	1/8" NPT to 1/4" SAE 45°, 90° elbow
36	ea	1	50082	1/8" NPT to 5/16" SAE 45° straight
37	ea	1	49045	#8 ORB hex socket plug c/w o-ring
38	ea	1	17344	Pressure control line 1/4" x 119.5" long
39	ea	1	17343	Scavenge line 5/16" x 116.5" long
40	ea	1	15405	#8-32 x 1/4" long, SHCS
41	ea	1	32058	Cable clamp fitting
42	ea	1	+ 12212	Throttle cable bracket
43	ea	1	X 12211	Throttle pull
44	ea	1	92147	Modified 1/4" tube to 1/8" NPT orifice
45	in	14.5	17334	1/4" poly tube, red
46	ea	1	50063	1/4" tube x 1/8" pipe connector
47	ea	1	12208	Throttle mount bracket

## ILLUSTRATED PARTS LIST FOR SYSTEM 9034 - 1999 GMC SIERRA & CHEVROLET SILVERADO CK2500 5.3L & 6.0 L, 2WD & 4WD

ITEM	UNIT	QTY	PART#	DESCRIPTION
48	ea	1	5039	Throttle controller
49	ea	2	50020	1/4" poly x 1/8" NPT, 90° elbow
50	in	4.5	17055	1/4" poly tube, black
51	in	7.25	17055	1/4" poly tube, black
52	ea	1	50105	1/4" NPT x 1/4" poly, 90° elbow
53	ea	1	36050	Reg./PTX block
54	ea	1	50063	1/2" tube x 1/8" pipe connector
55	ea	1	36046	Regulator valve
56	ea	1	15467	Return spring spacer washer
57	ea	1	58004	Throttle return clip
58	ea	1	35363	Temperature probe
59	ea	1	50108	1/8" NPT male to 1/4" poly tube tee
60	ea	1	92163	Inlet control valve
61	ea	1	36045	Filter cover
62	ea	1	15374	1/4" NC threaded rod x 3" long
63	ea	1	15029	1/4" NC nut Nylok
64	ea	1	15221	1/4" NC nut hex
65	ea	1	36037	Paper filter element
66	ea	1	92091	1/8" NPT x 5/16" SAE scavenge orifice 90° elbow
67	ea	1	36053	Silencing reed
68	ea	1	58004	Viton 3 1/8" ID x 1/8" wide o-ring
69	ea	2	22097	Cable clamp, 1/4"
70	ea	1	1227	VR7000 Compressor
71	ea	1	2035	Clutch, 6 groove
72	ea	1	49035	3/4"-16 straight thread nipple
73	ea	1	49032	Connector 1" male BSPP to 3/4" male 37° tube
74	ea	1	92039	Oil filter
75	ea	1	50060	Connector 1/2" NPT x 1/2" SAE
76	ea	2	43079	Split flared bushing
77	ea	1	11127	Main bracket
78	ea	1	26104	Adjuster
79	ea	1	14129	Idler spacer
80	ea	1	13007	Back idler
81 & 82	ea	1		Part of 13007
83	ea	1	13008	Idler, 6 rib
84	ea	1	14051	Idler bolt spacer
85	ea	1	15043	7/16" x 1" NC G8 PL HHCS
86	ea	1	34042	Fan spacer
87	ea	1	18143	Vibration Dampener
88	ea	3	15461	Spring pin
89	ea	1	18142	Pulley
90	ea	1	14156	Pulley mount block spacer
91	ea	1	15463	M16 x 180 G10.9, HHCS
92	ea	1	35412	VR7000 Switching box
93	ea	1	35404	VR7000 Control box
94	ea	1	35391	Interface cable
95	ea	1	15410	Hitch pin clip
96	ea	1	16224	VR7000 drive belt
97	ea	2	12210	Clip



**VMAC™**  
**VR7000**  
 SYSTEM #9034