

Sys 9012 9. ILLUSTRATED PARTS LIST -A

ITEM	QTY	UNIT	PART #	DESCRIPTION
1	1	EA	1205	SCREW COMPRESSOR
2	1	EA	92075	INLET CONTROL VALVE (BASIC SHORT)
3	1	EA	36037	PAPER FILTER ELEMENT
4	1	EA	36045	FILTER COVER
5	1	EA	15221	1/4 NC NUT
6	1	EA	15374	1/4 NC X 3" THREADED ROD
7	1	EA	15019	1/4 NC NYLOCK NUT
8	1	EA	58004	VITON O-RING 3 1/8
9	1	EA	50090	1/8 PIPE 90 EXTENDED STREET TEE
10	1	EA	35192	PRESSURE TRANSDUCER
11	1	EA	50063	1/8 PIPE 1/4 TUBE CONNECTOR
12	1	EA	2035	CLUTCH ASSEMBLY 6 GROOVE
13	1	EA	49002	1/2 TUBE 3/4 - 16 O-RING 90 ELBOW
14	1	EA	58005	VITON O-RING 11/16
15	1	EA	15420	O-RING COLLAR
16	2	EA	22026	HS - 28 HOSE CLAMP
17	1	EA	17159	GREEN STRIPE HOSE
18	1	EA	92068	COOLER ASSEMBLY
19	2	EA	50071	90 1/2 SAE TO 3/4 NPT ELBOW
20	1	EA	17161	BOTTOM RAD HOSE
21	1	EA	92039	OIL FILTER VR7000 3.250 SHORT
22	1	EA	12151	OIL FILTER BRACKET FORD 7.3 /99
23	1	EA	45087	REMOTE FILTER MOUNT
24	1	EA	50088	1/2 SAE X 3/8 NPT 90 ELBOW
25	1	EA	50087	1/2 SAE X 3/8 NPT 45 ELBOW
26	1	EA	17162	1/2" HT /41.0" OIL RETURN LINE
27	1	IN	17164	1/2" HT /62.5" OIL RETURN LINE
28	1	EA	17163	1/2" HT /29.0" OIL RETURN LINE
29	1	EA	17156	3/4" HT /51.0" AIR LINE
30	1	EA	17157	5/16" HT /55.0" SCAVANGE LINE
31	1	EA	17096	1/4" HT /68.0" PRESSURE CONTROL LINE
32	3	EA	15145	10 X 20 SHCS PITCH 1.5
33	1	EA	15044	3/8 ALLOY PC SAE WASHER
34	1	EA	18107	C/S PULLEY
35	1	EA	15385	RETAINING RING

19249A

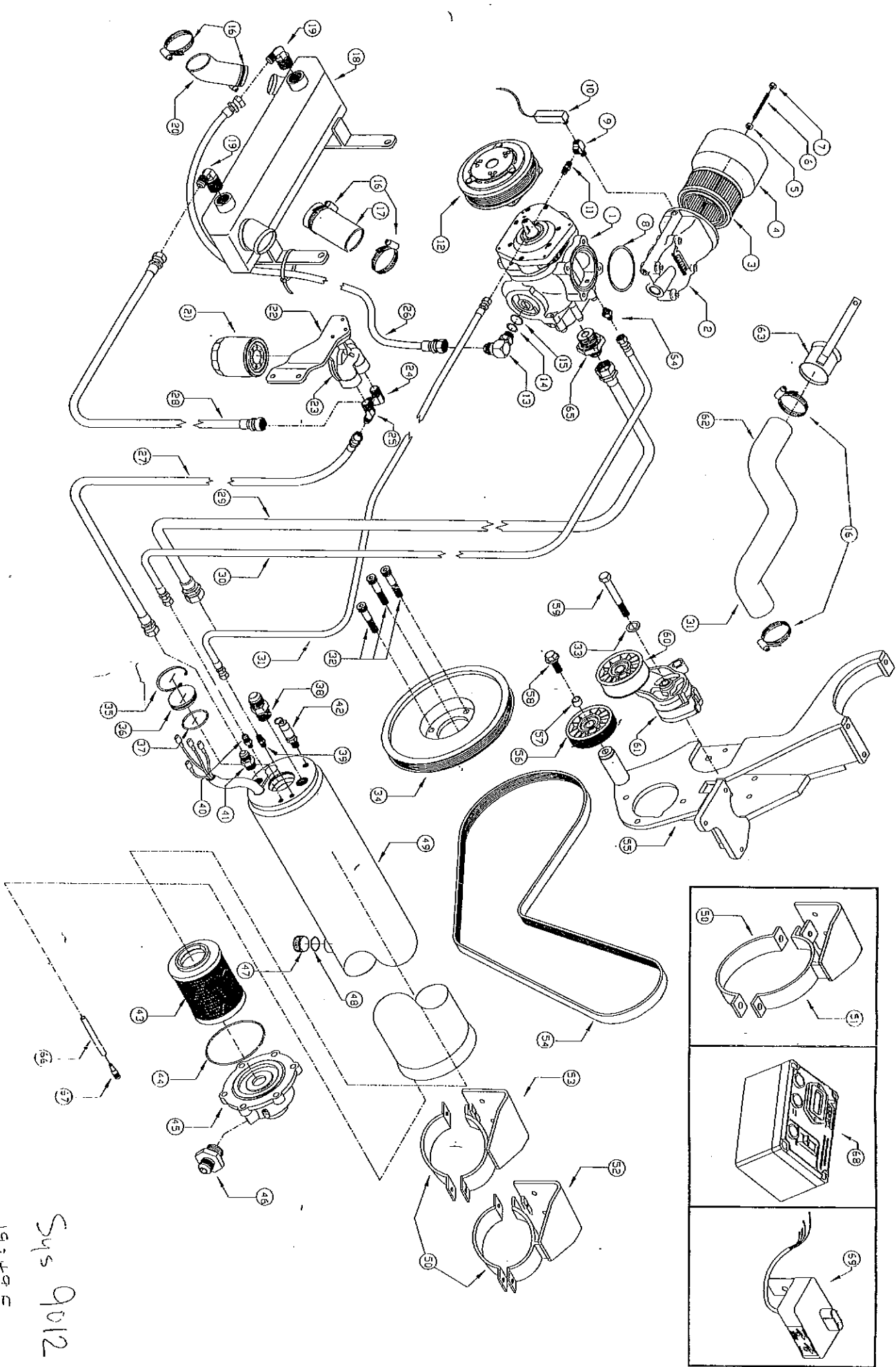
9. ILLUSTRATED PARTS LIST -A Con't

99 FORD SUPER DUTY F250 - F550 ILLUSTRATED PARTS LIST (CON'T)

ITEM	UNIT	QTY	PART #	DESCRIPTION
36	EA	1	32033	SIGHT GLASS WINDOW
37	EA	1	58008	O-RING 1 15/16 ID x 3/82 WIDE VITON
38	EA	1	49033	STEEL CONNECTOR 3/4" NPT x 3/4" JIC 37
39	EA	1	50062	BRASS 45 SAE COUPLING 1/4" NPT X 1/4 SAE
40	EA	1	50083	BRASS REDUCING COUPLING 45 SAE, 5/16" NPT X 1/4 NPT
41	EA	3	50060	1/2" HT X 1/2 NPT MALE
42	EA	1	36040	RELIEF VALVE 200 PSI <i>35000 54</i>
43	EA	1	36044	COALESCING ELEMENT WITH PULLER NUT
44	EA	1	58007	O-RING 4 1/2" ID x 1/8 WIDE
45	EA	1	36041	MINIMUM PRESSURE VALVE
46	EA	1	32082	MODIFIED 1" BSPP FITTING
47	EA	1	32066	PLUG
48	EA	1	58028	O-RING 15/16" ID x 3/32 WIDE
49	EA	1	3036	TANK
50	EA	2	22069	OVERSTRAP
51	EA	1	12150	TANK BRACKET (REAR BKT FOR PICK-UP INSTALLATION)
52	EA	1	12155	TANK BRACKET REAR
53	EA	1	12156	TANK BRACKET FRONT
54	EA	1	16231	5060750 COMPRESSOR DRME BELT
55	EA	1	11113	COMPRESSOR MOUNTING BRACKET
56	EA	1	13008	6 RIB BACK IDLER
57	EA	1	14051	IDLER BOLT SPACE
58	EA	1	15161	IDLER BOLT 1/2" x 1/4" NC FLANGE LOCK
59	EA	1	15419	12 x 80 MM HHCS TENSIONER BOLT
60	EA	1	13007	BACK IDLER
61	EA	1	26075	VR7000 AUTO BELT TENSIONER
62	EA	1	17152	TOP RAD HOSE (GATES 21284)
63	EA	1	22077	TOP RAD HOSE TIE
64	EA	1	92020	1/8 BSPP SCAVENGE ORIFICE FITTING
65	EA	1	49032	1" MALE BSPP TO 3/4 MALE 37 TUBE
66	EA	1	17134	SCAVENGE HOSE
67	EA	1	48105	SCAVENGE SCREEN FILTER
68	EA	1	35263	CONTROL PANEL BOX
69	EA	1	5032	SPEED CONTROL

19249

1 T91000B - 3500288 - 3500055



Sys 9012
19249 C