

**ILLUSTRATED PARTS LIST FOR SYSTEM 9019 - 1999-2001 INTERNATIONAL 4700,
4800, 4900 & 4700LP. DT 466E**

ASSY.	ITEM	UNIT	QTY	PART#	DESCRIPTION
1.0				48274	Main Bracket Assembly
	1.1	ea	1	11126	VR7000 main bracket
	1.2	ea	1	33021	Tensioner
	1.3	ea	1	15161	½" SAE Washer
	1.4	ea	1	15419	12mm x 80mm G10.9 HHCS
	1.5	ea	1	34023	Fan spacer
	1.6	ea	2	13007	Back idler
	1.7	ea	1	13008	Ribbed idler
	1.8	ea	1	14060	Spacer
	1.9	ea	2	14051	Idler bolt spacer
	1.10	ea	2	15161	½" x 1 ¼" NC G8 FI lock HHCS
	1.11	ea	1	18140	Crank pulley
	1.12	ea	6	15044	3/8" SAE washer
	1.13	ea	6	15012	10mm x 45mm HHCS
	1.14	ea	1	15157	12mm Socket head turned down
	1.15	ea	1	16287	VR7000 belt
	1.16	ea	1	16276	AC belt
2.0				1256	Compressor assembly
	2.1	ea	1	1202	VR7000 Compressor
	2.2	ea	1	2035	Clutch complete 6 groove
	2.3	ea	1	58072	Viton O-Ring 5/8" ID x 1/16" wide
	2.4	ea	1	15451	¾" O-Ring washer
	2.5	ea	1	49002	Elbow, steel JIC/O-Ring ½"-3/4"-16
	2.6	ea	1	35363	Temperature probe
	2.7	ea	1	58004	O-Ring Viton 3 1/8" ID x 1/8" wide
	2.8	ea	1	22097	Cable clamp ¼"
	2.9	ea	1	49032	1" male BSPP x ¾" male 37 Deg tube
	2.10	ea	1	49036	¾"- ¾" JIC 45 Deg swivel elbow
	2.11	ea	1	50064	Elbow, brass tube ¾" - 1/8"
	2.12	ea	1	50112	Elbow, brass 45 Deg 1/8"
	2.13	ea	1	49045	Hollow hex plug #8 SAE
	2.14	ea	1	92175	Inlet control valve
	2.15	ea	1	50081	Elbow brass NPT-tube 1/8" 5/16"
	2.16	ea	1	36037	Paper filter element
	2.17	ea	1	36045	Filter cover
	2.18	ea	1	15221	¼" NC nut
	2.19	ea	1	15374	¼" NC threaded rod 3" long
	2.20	ea	1	15029	¼" NC Nylock nut
	2.21	ea	1	15039	¼" SAE flat washer

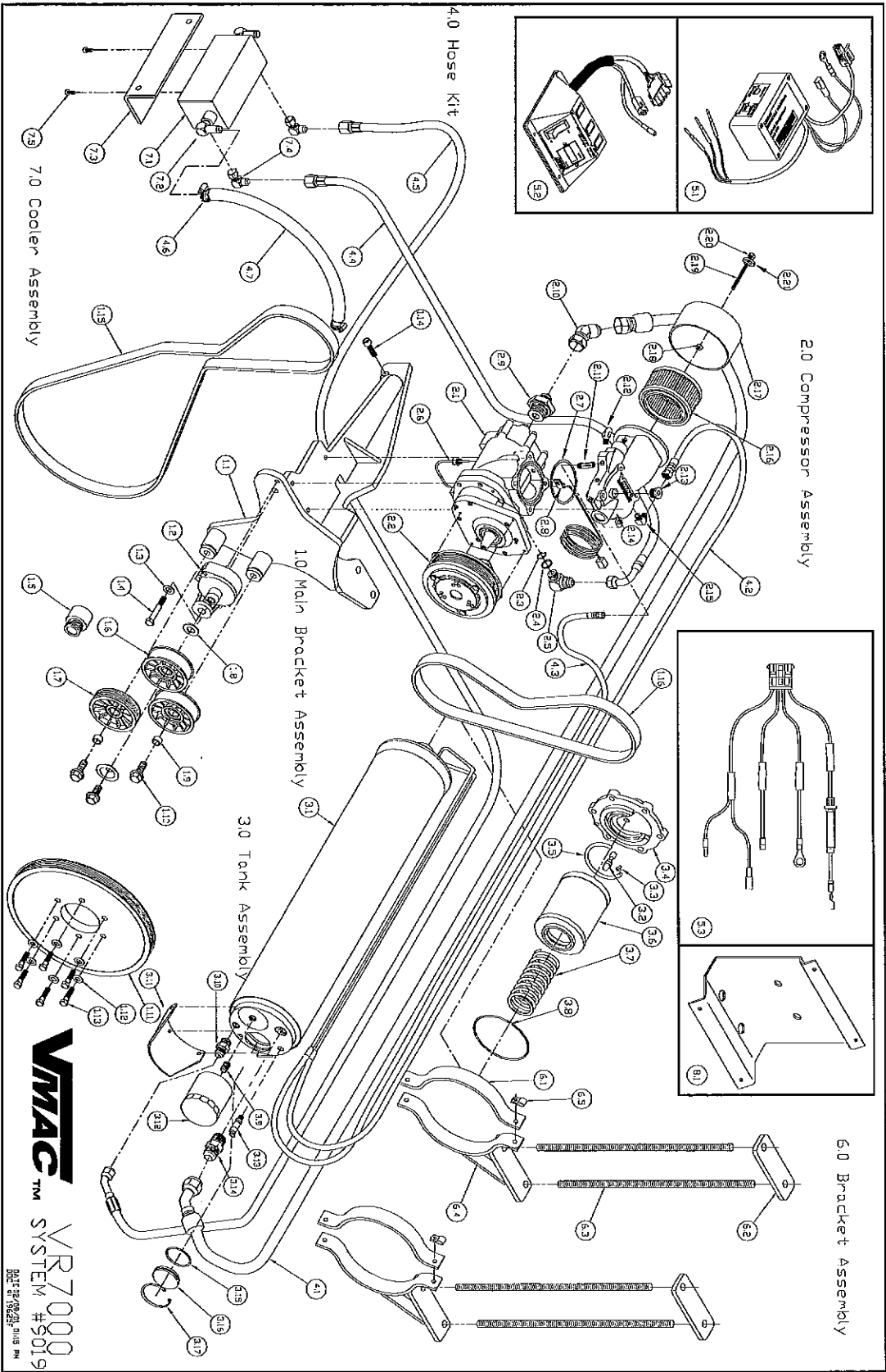


**ILLUSTRATED PARTS LIST FOR SYSTEM 9019 - 1999-2001 INTERNATIONAL 4700,
4800, 4900 & 4700LP. DT 466E**

ASSY.	ITEM	UNIT	QTY	PART#	DESCRIPTION
3.0				3044	Tank Assembly
	3.1	ea	1	92199	Main tank body
	3.2	ea	1	48241	Scavenge screen assembly
	3.3	ea	1	15077	10-32 x 3/8" SHCS button head
	3.4	ea	1	32190	Discharge cap
	3.5	ea	1	36064	Tank rear cap seal
	3.6	ea	1	36036	Coalescing filter element
	3.7	ea	1	58068	Compression spring
	3.8	ea	1	58066	O-Ring, 4 3/4" ID x 1/8" wide Viton
	3.9	ea	1	49035	3/4"- 16 Threaded Nipple
	3.10	ea	1	50089	3/8" NPT - 1/2" SAE Brass connector
	3.11	in	1	12262	Guard plate
	3.12	ea	1	92039	VR7000 oil filter
	3.13	ea	1	36054	200PSI Relief valve
	3.14	ea	1	49033	3/4" NPT x 3/4" 37 Deg JIC steel connector
	3.15	ea	1	58008	O-Ring 1 15/16" ID x 3/32 wide Viton
	3.16	ea	1	32033	Sight glass window
	3.17	ea	1	15385	Retaining ring
4.0					Hose kit
	4.1	ea	1	17354	Hose, AQP 45 Deg, 3/4" x 82.5" (main air line)
	4.2	ea	1	17505	Hose, HT w/tube assembly, 5/16" x 129.5" (scavenge line)
	4.3	ea	1	17504	Hose, HT w/tube assembly 1/4" x 128.75" (pressure control line)
	4.4	in	36	17280	Hose, AQP w/elbow 1/2" x 29"
	4.5	ea	1	17352	Hose, AQP w/elbow, 1/2" x 113" (tank to cooler)
	4.6	ea	2	22029	Clamp, hose HS10
	4.7	in	24	17177	Hose, 3/4" heater
5.0					Electrical
	5.1	ea	1	5043	VR7000 Throttle control
	5.2	ea	1	35388	Control box
	5.3	ea	1	35393	Interface cable

**ILLUSTRATED PARTS LIST FOR SYSTEM 9019 - 1999-2001 INTERNATIONAL 4700,
4800, 4900 & 4700LP. DT 466E**

ASSY.	ITEM	UNIT	QTY	PART#	DESCRIPTION
6.0					Tank Brackets
	6.1	ea	2	22069	Overstrap
	6.2	ea	2	22071	Frame clamp strap
	6.3	ea	2	15409	½"x18" NC Threaded rod
	6.4	ea	2	12178	Tank brackets
	6.5	ea	2	22133	Tube clamp, insulated, double
7.0					Cooler Assembly
	7.1	ea	1	92208	VR7000 Cooler
	7.2	ea	2	53084	Elbow NPT/hose ¾" x ¾"
	7.3	ea	1	12284	Cooler mounting plate
	7.4	ea	2	49047	Elbow 90 Deg steel ½"- ½" JIC
	7.5	ea	2	15049	Bolt,HHCS FLock PI 3/8" x ¾"
8.0					Miscellaneous
	8.1	ea	1	12194	Control box mount



VMAC VR7000
 SYSTEM #5019
 DATE 02/2000 11:18 PM